

SYWA 系列离心式空调风机

Centrifugal Ventilators

概述

Summary

浙江亿利达风机股份有限公司特此证明，此处所示 SYWA 系列离心风机获得了加盖 AMCA 印章的授权。所示额定值系根据 AMCA 出版物 211 和 AMCA 出版物 311 所进行测试和程序确定，并符合 AMCA 认证额定值计划的要求。

这里描述的所有离心风机都已经取得了 AMCA 印章，其认证数据见第 031 页到 045 页。

Zhejiang Yilida Ventilator Co.,Ltd. certifies that the SYWA Series fans shown herein are licensed to bear the AMCA Seal. The ratings shown are based on tests and procedures performed in accordance with AMCA Publication 211 and AMCA Publication 311 and comply with the requirements of the AMCA Certified Ratings Program.

All the Centrifugal Fans described herein are licensed to bear the AMCA Seal, and their certified ratings are shown on pages 031 through 045.

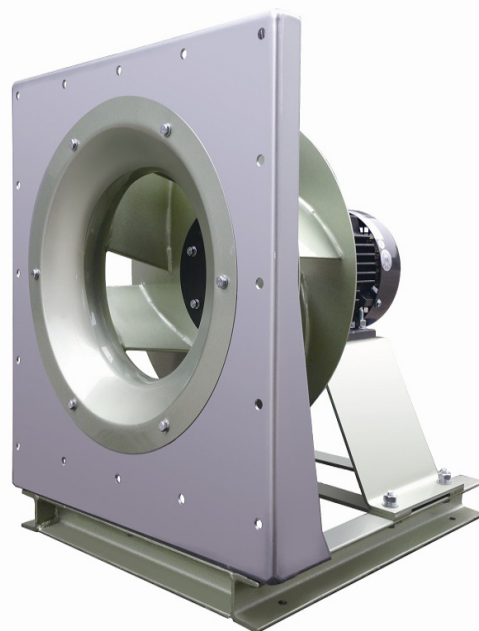


SYWA 系列离心式空调风机采用国际同类产品先进技术自行开发生产，通过了 AMCA 国际认证并取得 AMCA 印章。该样本中列出的 13 种规格风机，流量范围从 500m³/h-70000m³/h。具有结构紧凑、效率高、噪声低等特点，是各类中央空调机组及其他暖通空调、净化、通风等设备理想的配套产品。

The SYWA Series of the centrifugal plug fans were developed with advanced technologies. They are licensed to bear the AMCA Seal for air performance, sound, and FEG. The SYWA Series includes 13 models as described in this catalogue. The volume flow of the SYWA Series ranges from 500 m³/h to 70,000 m³/h. Some of the features and characteristics of these fans are: compact structure, high efficiency, low noise, and low power consumption. These fans are ideal for use in central air-conditioning systems, in purifiers. They are also suitable for use in a variety of other ventilation applications.

命名方式

Nomenclature



产品结构

Product Features

SYWA 系列风机主要由叶轮、进风口、进风口定位板、电机支架构成。风机底座为可选件。风机底座(常规配置不带法兰)构成。

SYWA series fans are mainly constructed of Wheel, inlet, inlet positioning plate and motor bracket. Fan base (is optional).

1. 叶轮

无蜗壳风机叶轮采用优质钢板加工制作，采用符合空气动力学的机翼型叶片保证了高效率，低功耗的特点。该离心风机采用回转无叶扩压技术，特性曲线光滑，静压效率高。所有叶轮均按照 ANSI/AMCA204-05 标准运用精确的电子平衡机进行静平衡和动平衡测试，内控精度达到 G2.5 级或更优水平。

1. wheel

Plug backward airved blade Wheel is constructed of high-grade steel With the advanced aerodynamics profile to achieve higher efficiency and lower noise level. With the non Wheel diffuser technology, the centrifugal fan can get a smooth performance curve and make the static efficiency increase clearly. All Wheels are balanced to ANSI/AMCA Standard 204-05. Yilida's internal standard is G2.5 or higher for wheel balancing.

2. 进风口

无蜗壳风机进风口采用优质钢板或铝合金加工制作，符合空气动力学的流线型设计，整体拉伸工艺成型。与叶轮配合部分采用二次翻边工艺，使得气流更加稳定的进入叶轮，减少了压力损失并提高了风机效率。

叶轮与进风口配合：无蜗壳风机的进风口与叶轮配合部分的轴向及径向距离是按照空气动力学设计计算，能够提高风机性能稳定性。

3. 进风口定位板

进风口面板采用高强度钢板加工制作而成，面板四边采用翻边焊接工艺并采用加强板与底座连接，增加了面板的强度，使得风机在运行的时候面板能够承受更大的压力并能降低风机的振动。对于叶轮直径较大、压力较大的风机安装风机加强支架，能够提高风机运行的稳定性以及安全性。

4. 风机底座

风机底座采用槽钢型材经焊接加工成型，强度高，安装方便。

5. 电机支架

电机支架结构充分考虑了气流的流道设计，能够减小风机的流动损失。采用钢板折弯成型，对于受力较大部分有加强板进行加强，有效提高风机运行的安全性。

轮毂：轮毂采用锥套式或顶丝轴套式结构，保证了叶轮与电机连接的稳定性，提高风机的运行安全性。

6. 电机

亿利达风机标配使用全封闭三相鼠笼式电机，符合 IEC 和 EN 标准。标准电机的绝缘等级为 F 级，防护等级为 IP54 以上，B 级温升。使用环境温度为 $-40^{\circ}\text{C} \sim +40^{\circ}\text{C}$ ，其它的运行条件见要求。电机轴承寿命为 $L_{10} \geq 100000$ 小时。

2. Inlet

Plug backward curved inlet is constructed of high-grade steel or aluminum alloy with the whole stretch forming process by the advanced aerodynamics profile design. The inlet, where is fixed to the Wheel use two flanging process to make the air into the Wheel more stable, losses lesser and fan efficiency higher.

Wheel fits inlet: the axial and radial distance where in the inlet fits the is designed by the aerodynamic calculation to improve the fan performance stability. The sizes in detail are shown on page

3. Inlet Panel

Inlet panel is constructed of high-strength steel by flanging and welding in four sides, fitted to the base by the strengthened board to increase the strength of the panel, making the panel withstand greater pressure when the fan runs to reduce fan vibration. For larger diameter Wheel, greater pressure, the fan can improve the fan operation stability and safety by increasing the strengthen of the fan. bracket.

4. Fan Base

Fan base is high strength and easy to install by using channel steel with welding molding.

5. Motor Bracket

To reduce the fan flow losses, the motor bracket structure takes the air flow into account fully. It can strengthen the greater pressure area by the strengthening board to improve fan running safety.

Hub: hub is constructed of tapered sleeve or threaded shaft sleeve to ensure the stability of the Wheel fitting the motor, and to improve the fan running safety.

6. Motor

The motor used in SYWA series fans are totally-enclosed three-phase squirrel-cage motors, they are up to the standards of the IEC and the EN, Standard motors' Insulation Class is F, and Ingress Protection is IP54 or above, B temperature rise. Ambient temperature is $-40^{\circ}\text{C} \sim +40^{\circ}\text{C}$, the other operating conditions are shown in the requirements. Motor bearing service life (L_{10}) are over 100,000 hours ($L_{10} \geq 10000$ hours).

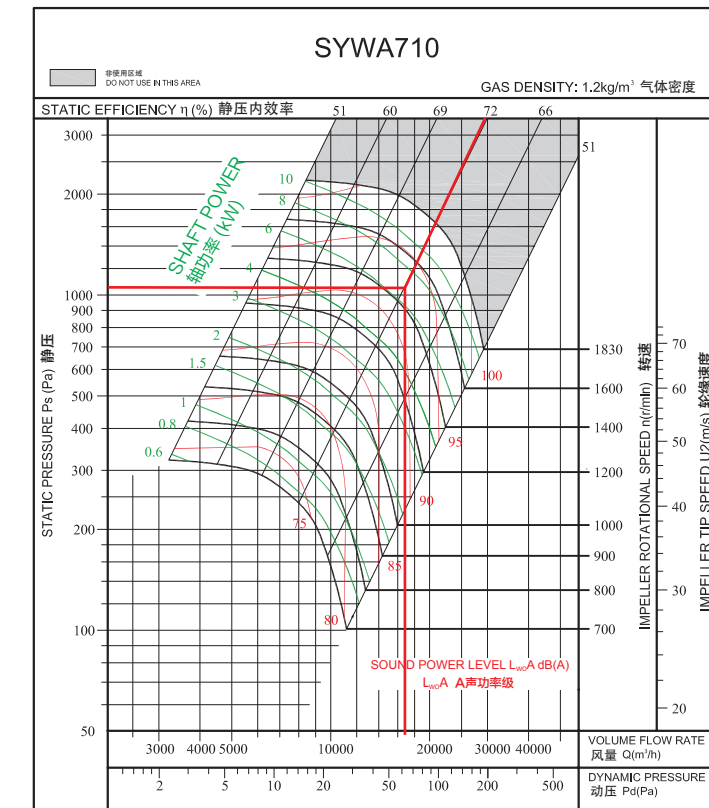
风机性能

Performance Chart

1、风机选型示意图例

1. Example of Curve Reading

型号 Type	SYWA710
风量 Volume	$q_v=16553\text{m}^3/\text{h}$
静压 Static Pressure	$P_{st}=1030\text{Pa}$
动压 Dynamic Pressure	$P_{df}=61\text{Pa}$
风机转速 Fan Speed	$n=1450\text{r}/\text{min}$
轴功率 Shaft Power	$P_{sh}=6.571\text{KW}$
A声功率级 A Sound Power Level	$L_{WA}=96.8\text{dB(A)}$
静压效率 Static Efficiency	$\eta_{st}=72\%$



说明

- 1). 订货时须注明风机型号、转速、风量、风压、出风口方向和旋转方向。若需配套皮带、皮带轮、电机、安装底座等配件及其它特殊要求可在订货时提出。
- 2). 在安装前应对风机各部件进行检查，对叶轮、主轴和轴承等主要机件应重点细致检查，如有损伤应修复后再安装使用。
- 3). 检查机壳和其它壳体内部，不应有掉入、遗留的工具和杂物。
- 4). 风机正式运转前，需检查电机的转向是否符合风机转向的要求。
- 5). 风管与出风口之间应采用软连接，接头不得拉紧。
- 6). 风机安装后用手或杠杆拨动叶轮，检查是否过紧或碰撞现象，确认无这些现象时方可进行试转。
- 7). 风机配用电机功率是指在特定工况下，风机内功率加上机械损失与电机容量安全系数而言，并非出风口全敞开时所需的功率。为防止电机超功率运行而烧毁，严禁风机出风口或进风口不接管路或未加外界任何阻力进行空运转。
- 8). 风机在无较大腐蚀性气体、不含酸(碱)性和尘颗粒物小于 $150\text{mg}/\text{m}^3$ 的气体、 $-20^\circ\text{C} < \text{温度} < 85^\circ\text{C}$ 的气体环境下使用，风机在运输装卸过程中应小心轻放，防止碰撞挤压。

Instructions

- 1) When placing the order, it is necessary to state the type of fan, speed, air volume, air pressure, discharge direction, rotation direction, type of electric motor and its specifications.
- 2) Prior to installation, the fan should be carefully inspected. Special care should be taken in checking the shaft, Wheel and bearings. If there is an indication of any damage, the damaged parts should be repaired or replaced before the fan is installed or commissioned.
- 3) The inside of the scroll and casing need to be checked to make sure that there are no foreign objects inside the housing, such as tools or loose parts.
- 4) The rotational directions of the motor and Wheel should be checked to ensure that they are in compliance with the specification and purchase orders.
- 5) A flexible connector should be used between the fan out let flange and its mating ductwork. The flex connector should not be over-stretched.
- 6) Following the installation, the Wheel should be turned by hand or with the use of a wrench to make sure that it turns freely without colliding with other parts of the fan. Once all this is done, the fan can be commissioned normally.
- 7) The rated motor power as calculated herein might not be sufficient to drive the fan with an unrestricted discharge flow. Operating the fan with an unrestricted discharge outlet will result in flow rate that exceeds the specified fan capabilities. Such operation will quickly burn the motor and damage the fan. Great care must be taken in operating the fan to make sure that the maximum rated flows, as provided on the performance charts in this catalog, are not exceeded.
- 8) The fan is limited for use in areas where air substances are non-corrosive, non-toxic and non-erosive and where dust particles are less than $150\text{mg}/\text{m}^3$ with a temperature between -20°C and 85°C . Special care should be taken during transportation, load and unload.

技术参数

Wheel diameter	叶轮直径	D = 289 mm	Fan weight	风机重量	m = 30 kg
Moment of inertia	转动惯量	J = 0.056 $\text{kg}\cdot\text{m}^2$	Speed limit	极限转速	$n_{\text{max}} = 4840 \text{ r/min}$

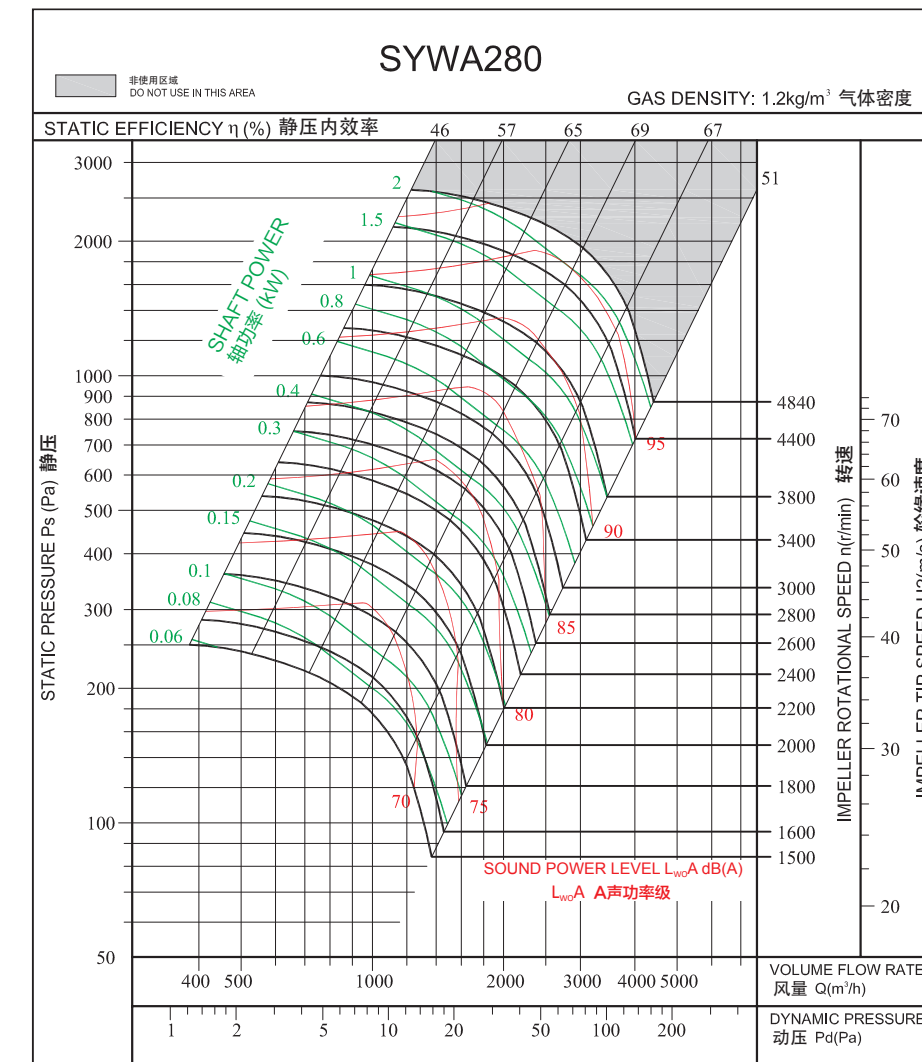
Technical Data

性能曲线

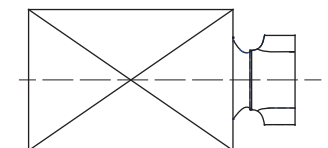
经认证的性能是A类安装：自由入口，自由出口。各项性能额定值不包括附属物(附件)的影响。所示A加权声音性能额定值已按AMCA International标准301计算。所示值为安装类型A：自由入口，自由出口的声功率级(出口 L_{wA})。

Performance Curves

Performance certified is for installation type A: free inlet, free outlet. Performance ratings do not include the effects of appurtenances (accessories). The A-weighted sound ratings shown have been calculated per AMCA International Standard 301. Values shown are for outlet L_{wA} sound power levels for installation type A: free inlet, free outlet.



Measured in installation A according to AMCA Standard 210:



技术参数

Technical Data

技术参数

Technical Data

Wheel diameter 叶轮直径	D = 325 mm	Fan weight 风机重量	m = 40 kg
Moment of inertia 转动惯量	J = 0.076 kg·m ²	Speed limit 极限转速	n _{max} = 4140 r/min

Wheel diameter 叶轮直径	D = 383 mm	Fan weight 风机重量	m = 45 kg
Moment of inertia 转动惯量	J = 0.136 kg·m ²	Speed limit 极限转速	n _{max} = 3720 r/min

性能曲线

Performance Curves

性能曲线

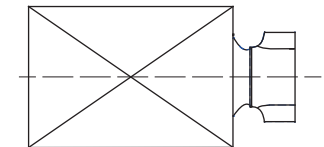
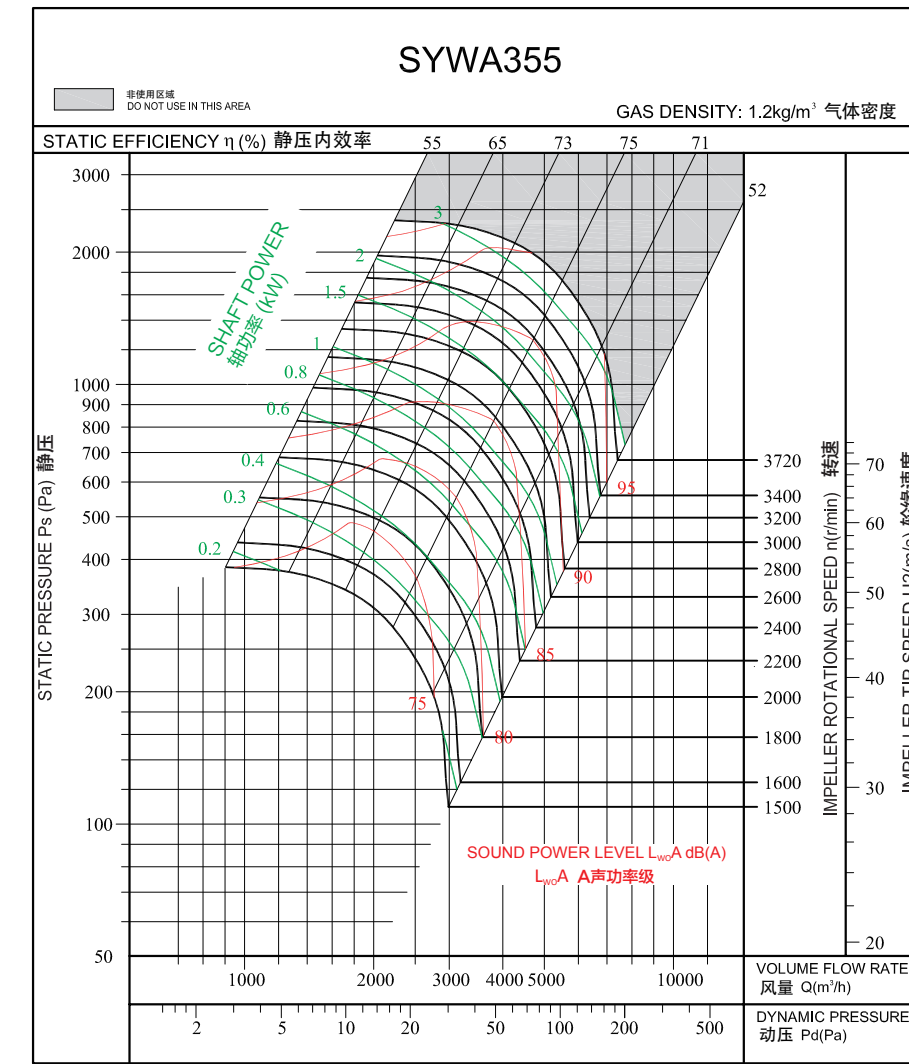
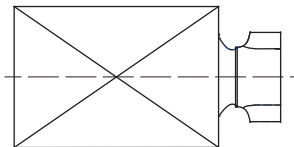
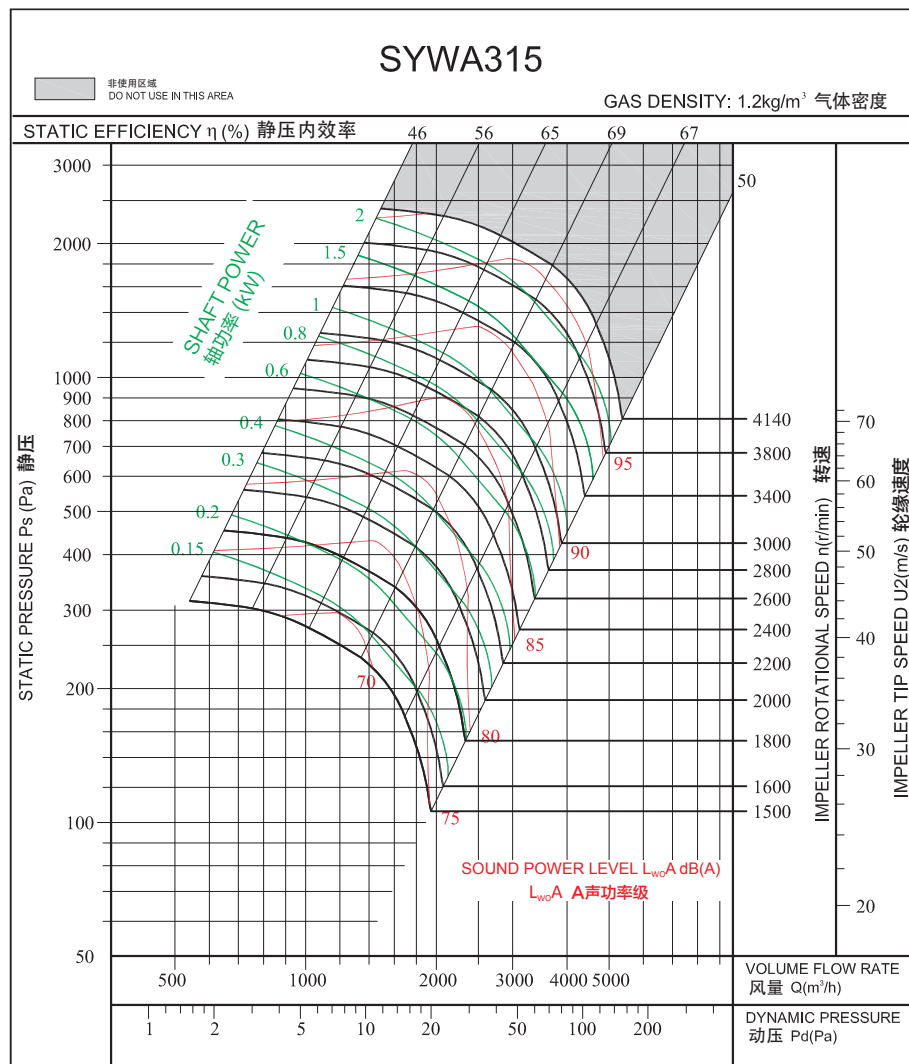
Performance Curves

经认证的性能是A类安装：自由入口，自由出口。各项性能额定值不包括附属物(附件)的影响。所示A加权声音性能额定值已按AMCA International标准301计算。所示值为安装类型A：自由入口，自由出口的声功率级（出口L_{wcA}）。

Performance certified is for installation type A: free inlet, free outlet. Performance ratings do not include the effects of appurtenances (accessories). The A-weighted sound ratings shown have been calculated per AMCA International Standard 301. Values shown are for outlet L_{wcA} sound power levels for installation type A: free inlet, free outlet.

经认证的性能是A类安装：自由入口，自由出口。各项性能额定值不包括附属物(附件)的影响。所示A加权声音性能额定值已按AMCA International标准301计算。所示值为安装类型A：自由入口，自由出口的声功率级（出口L_{wcA}）。

Performance certified is for installation type A: free inlet, free outlet. Performance ratings do not include the effects of appurtenances (accessories). The A-weighted sound ratings shown have been calculated per AMCA International Standard 301. Values shown are for outlet L_{wcA} sound power levels for installation type A: free inlet, free outlet.



技术参数

Technical Data

Wheel diameter 叶轮直径	D = 408 mm	Fan weight 风机重量	m = 55 kg
Moment of inertia 转动惯量	J = 0.208 kg·m ²	Speed limit 极限转速	n _{max} = 3300 r/min

技术参数

Technical Data

Wheel diameter 叶轮直径	D = 458mm	Fan weight 风机重量	m = 65 kg
Moment of inertia 转动惯量	J = 0.393 kg·m ²	Speed limit 极限转速	n _{max} = 3000 r/min

性能曲线

Performance Curves

经认证的性能是A类安装：自由入口，自由出口。各项性能额定值不包括附属物(附件)的影响。所示A加权声音性能额定值已按AMCA International标准301计算。所示值为安装类型A：自由入口，自由出口的声功率级（出口L_{wcA}）。

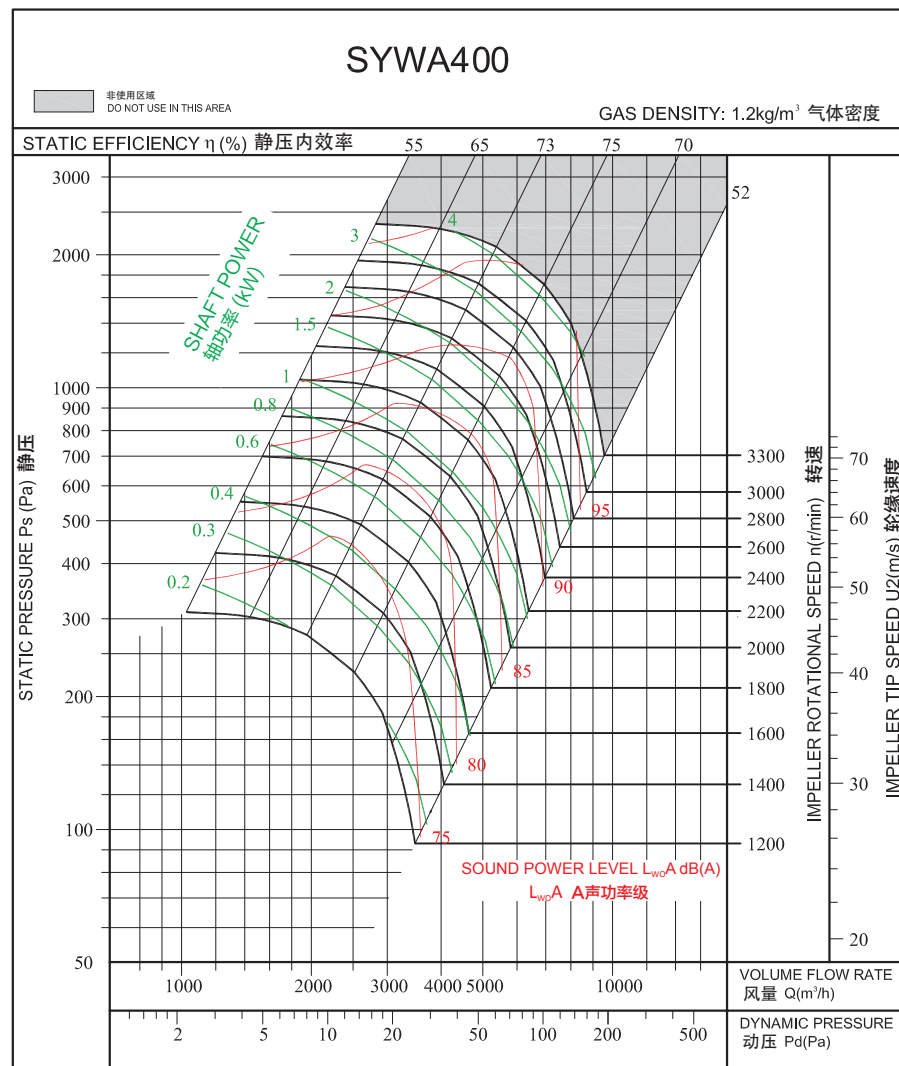
Performance certified is for installation type A: free inlet, free outlet. Performance ratings do not include the effects of appurtenances (accessories). The A-weighted sound ratings shown have been calculated per AMCA International Standard 301. Values shown are for outlet L_{wcA} sound power levels for installation type A: free inlet, free outlet.

性能曲线

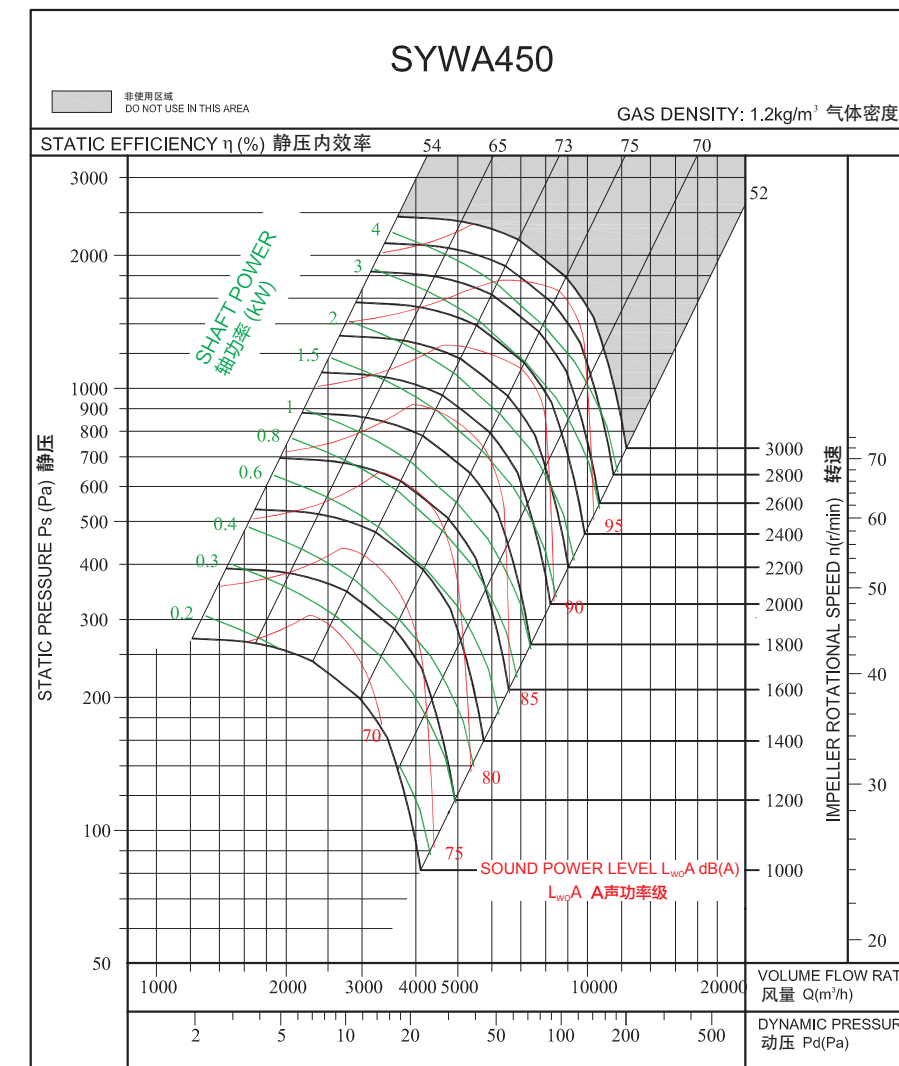
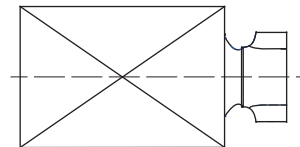
Performance Curves

经认证的性能是A类安装：自由入口，自由出口。各项性能额定值不包括附属物(附件)的影响。所示A加权声音性能额定值已按AMCA International标准301计算。所示值为安装类型A：自由入口，自由出口的声功率级（出口L_{wcA}）。

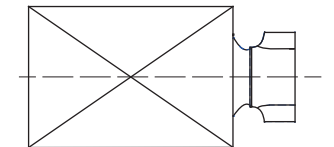
Performance certified is for installation type A: free inlet, free outlet. Performance ratings do not include the effects of appurtenances (accessories). The A-weighted sound ratings shown have been calculated per AMCA International Standard 301. Values shown are for outlet L_{wcA} sound power levels for installation type A: free inlet, free outlet.



Measured in installation A according to AMCA Standard 210:



Measured in installation A according to AMCA Standard 210:



技术参数

Technical Data

Wheel diameter	叶轮直径	D = 508 mm	Fan weight	风机重量	m = 80kg
Moment of inertia	转动惯量	J = 0.567 kg·m ²	Speed limit	极限转速	n _{max} = 2600 r/min

技术参数

Technical Data

Wheel diameter	叶轮直径	D = 568mm	Fan weight	风机重量	m = 90 kg
Moment of inertia	转动惯量	J = 0.992 kg·m ²	Speed limit	极限转速	n _{max} = 2340 r/min

性能曲线

Performance Curves

经认证的性能是A类安装：自由入口，自由出口。各项性能额定值不包括附属物(附件)的影响。所示A加权声音性能额定值已按AMCA International标准301计算。所示值为安装类型A：自由入口，自由出口的声功率级（出口L_{wcA}）。

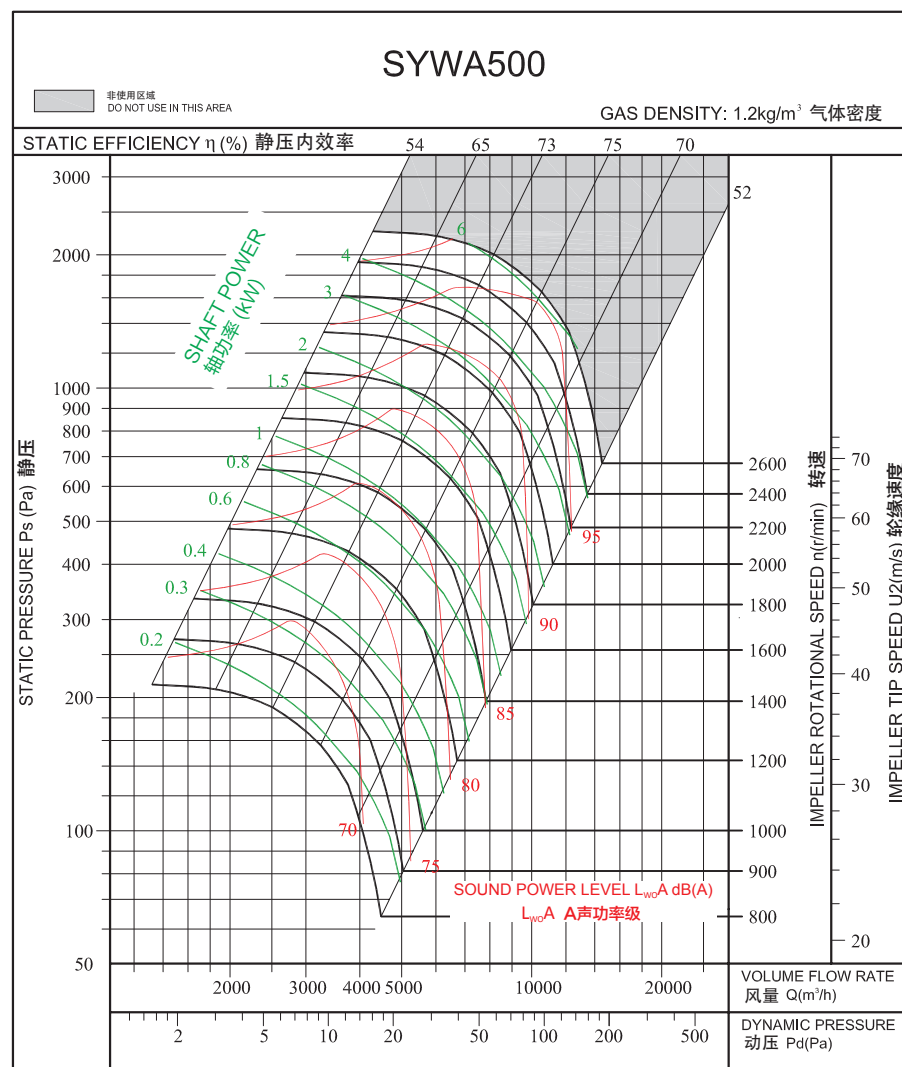
Performance certified is for installation type A: free inlet, free outlet. Performance ratings do not include the effects of appurtenances (accessories). The A-weighted sound ratings shown have been calculated per AMCA International Standard 301. Values shown are for outlet L_{wcA} sound power levels for installation type A: free inlet, free outlet.

性能曲线

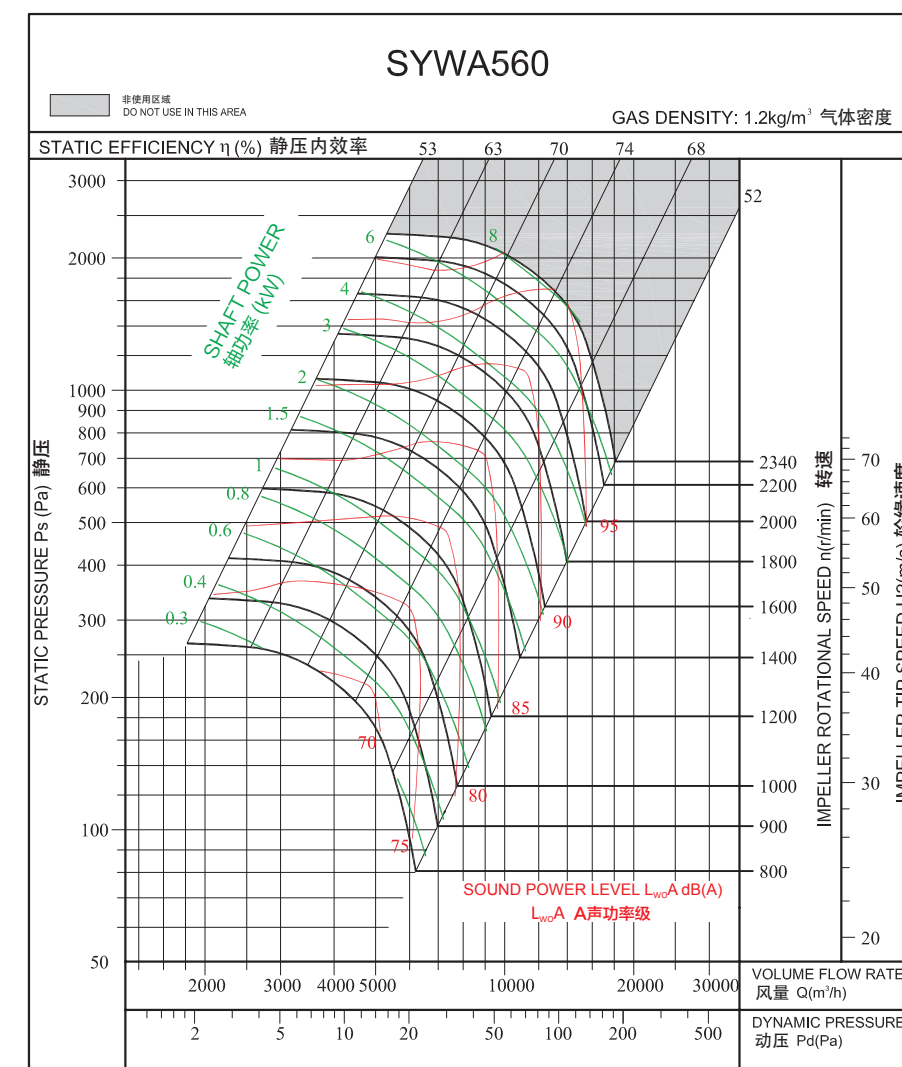
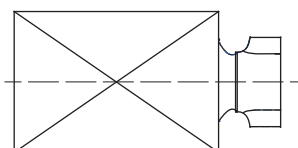
Performance Curves

经认证的性能是A类安装：自由入口，自由出口。各项性能额定值不包括附属物(附件)的影响。所示A加权声音性能额定值已按AMCA International标准301计算。所示值为安装类型A：自由入口，自由出口的声功率级（出口L_{wcA}）。

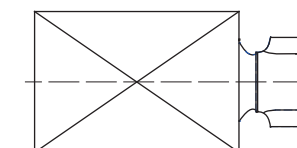
Performance certified is for installation type A: free inlet, free outlet. Performance ratings do not include the effects of appurtenances (accessories). The A-weighted sound ratings shown have been calculated per AMCA International Standard 301. Values shown are for outlet L_{wcA} sound power levels for installation type A: free inlet, free outlet.



Measured in installation A according to AMCA Standard 210:



Measured in installation A according to AMCA Standard 210:



技术参数

Technical Data

Wheel diameter	叶轮直径	D = 638mm	Fan weight	风机重量	m = 110 kg
Moment of inertia	转动惯量	J = 1.602 kg·m ²	Speed limit	极限转速	n _{max} = 2120 r/min

技术参数

Technical Data

Wheel diameter	叶轮直径	D = 716mm	Fan weight	风机重量	m = 140 kg
Moment of inertia	转动惯量	J = 2.723 kg·m ²	Speed limit	极限转速	n _{max} = 1830 r/min

性能曲线

Performance Curves

经认证的性能是A类安装：自由入口，自由出口。各项性能额定值不包括附属物(附件)的影响。所示A加权声音性能额定值已按AMCA International标准301计算。所示值为安装类型A：自由入口，自由出口的声功率级（出口L_{wcA}）。

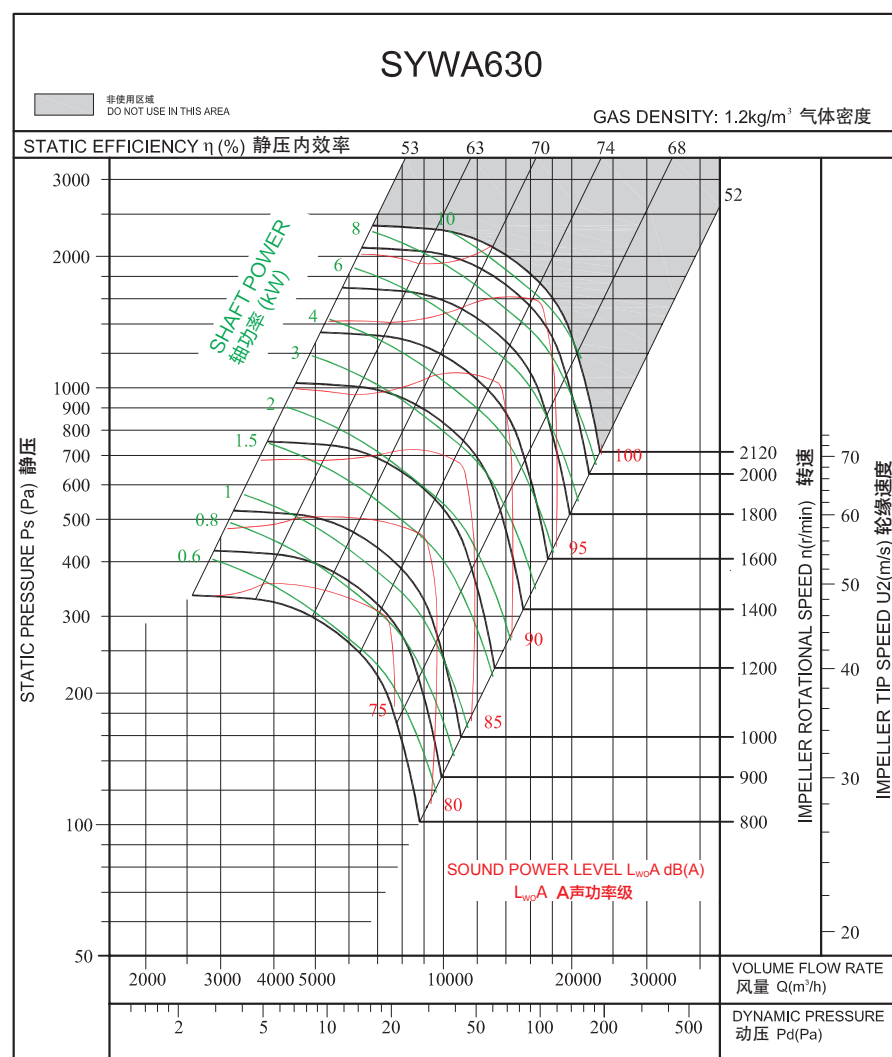
Performance certified is for installation type A: free inlet, free outlet. Performance ratings do not include the effects of appurtenances (accessories). The A-weighted sound ratings shown have been calculated per AMCA International Standard 301. Values shown are for outlet L_{wcA} sound power levels for installation type A: free inlet, free outlet.

性能曲线

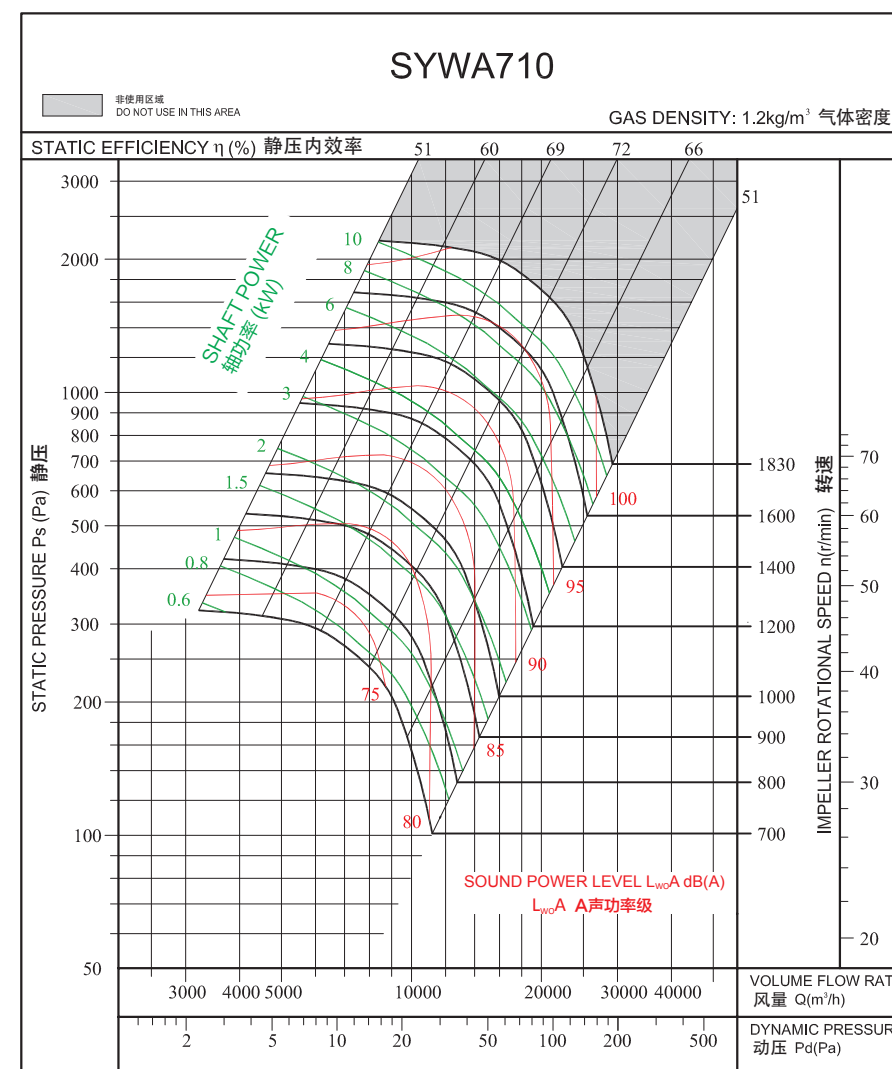
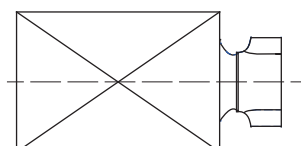
Performance Curves

经认证的性能是A类安装：自由入口，自由出口。各项性能额定值不包括附属物(附件)的影响。所示A加权声音性能额定值已按AMCA International标准301计算。所示值为安装类型A：自由入口，自由出口的声功率级（出口L_{wcA}）。

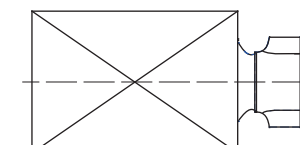
Performance certified is for installation type A: free inlet, free outlet. Performance ratings do not include the effects of appurtenances (accessories). The A-weighted sound ratings shown have been calculated per AMCA International Standard 301. Values shown are for outlet L_{wcA} sound power levels for installation type A: free inlet, free outlet.



Measured in installation A according to AMCA Standard 210:



Measured in installation A according to AMCA Standard 210:



技术参数

Technical Data

Wheel diameter 叶轮直径	D = 806mm	Fan weight 风机重量	m = 210 kg
Moment of inertia 转动惯量	J = 5.034 kg·m ²	Speed limit 极限转速	n _{max} = 1630 r/min

技术参数

Technical Data

Wheel diameter 叶轮直径	D = 905mm	Fan weight 风机重量	m = 300 kg
Moment of inertia 转动惯量	J = 9.214 kg·m ²	Speed limit 极限转速	n _{max} = 1490 r/min

性能曲线

Performance Curves

经认证的性能是A类安装：自由入口，自由出口。各项性能额定值不包括附属物(附件)的影响。所示A加权声音性能额定值已按AMCA International标准301计算。所示值为安装类型A：自由入口，自由出口的声功率级（出口L_{wcA}）。

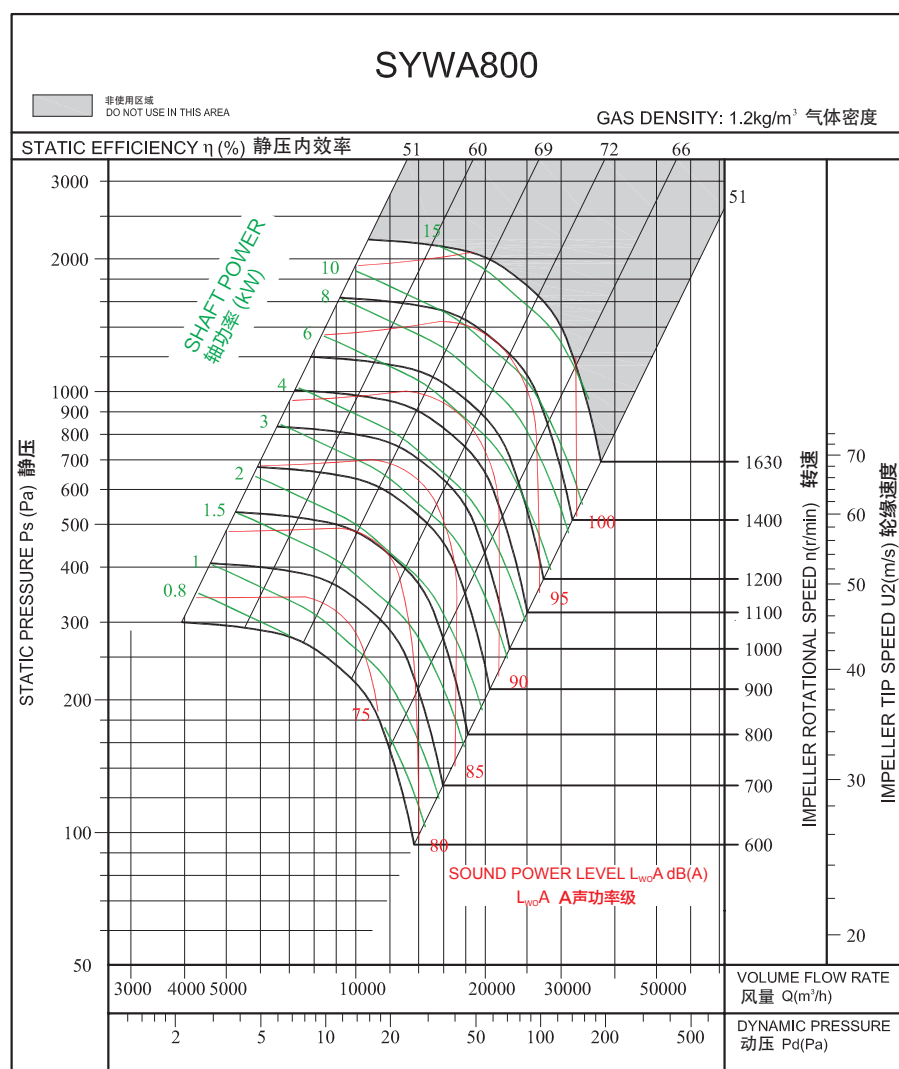
Performance certified is for installation type A: free inlet, free outlet. Performance ratings do not include the effects of appurtenances (accessories). The A-weighted sound ratings shown have been calculated per AMCA International Standard 301. Values shown are for outlet L_{wcA} sound power levels for installation type A: free inlet, free outlet.

性能曲线

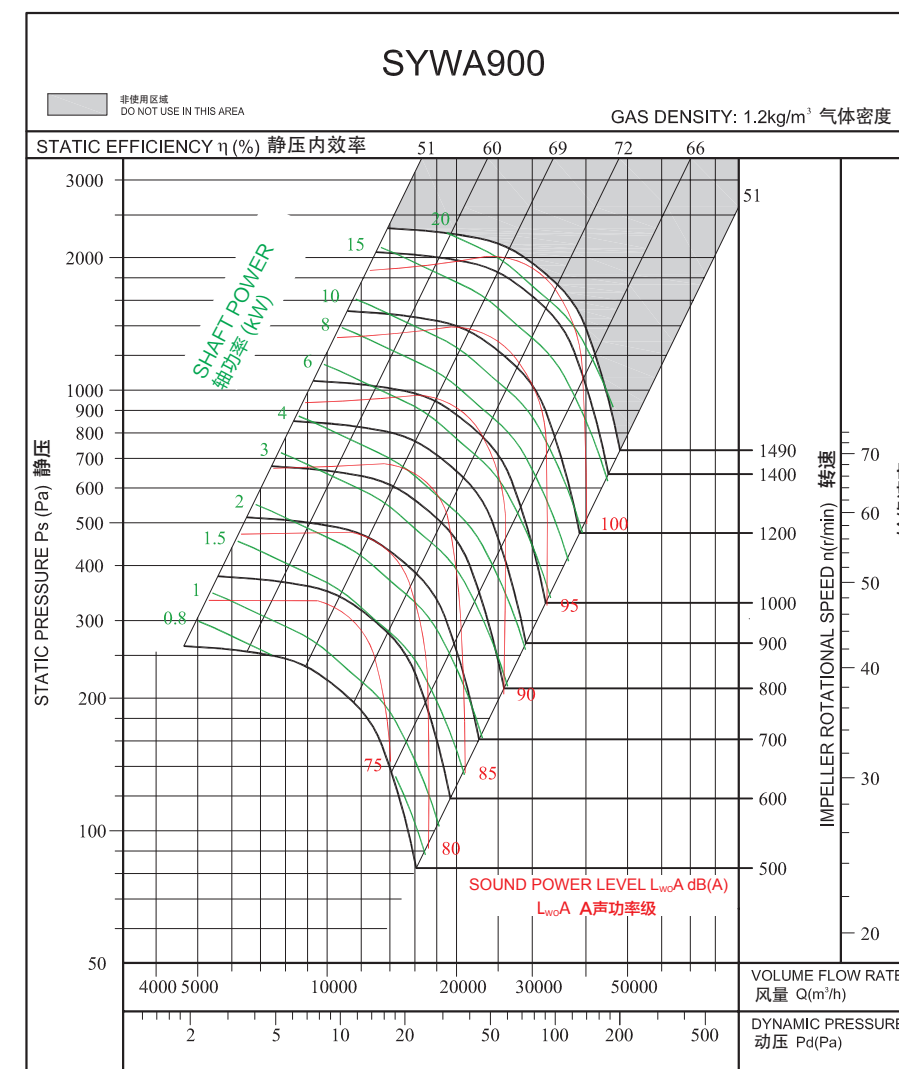
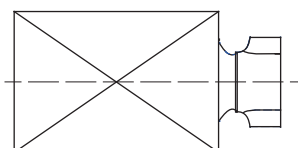
Performance Curves

经认证的性能是A类安装：自由入口，自由出口。各项性能额定值不包括附属物(附件)的影响。所示A加权声音性能额定值已按AMCA International标准301计算。所示值为安装类型A：自由入口，自由出口的声功率级（出口L_{wcA}）。

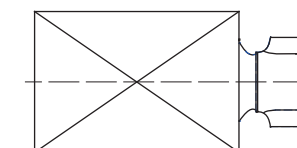
Performance certified is for installation type A: free inlet, free outlet. Performance ratings do not include the effects of appurtenances (accessories). The A-weighted sound ratings shown have been calculated per AMCA International Standard 301. Values shown are for outlet L_{wcA} sound power levels for installation type A: free inlet, free outlet.



Measured in installation A according to AMCA Standard 210:



Measured in installation A according to AMCA Standard 210:



技术参数

Technical Data

Wheel diameter 叶轮直径	D = 1000 mm	Fan weight 风机重量	m = 350 kg
Moment of inertia 转动惯量	J = 14.375 kg·m ²	Speed limit 极限转速	n _{max} = 1320 r/min

技术参数

Technical Data

Wheel diameter 叶轮直径	D = 1120 mm	Fan weight 风机重量	m = 410 kg
Moment of inertia 转动惯量	J = 23.52 kg·m ²	Speed limit 极限转速	n _{max} = 1250 r/min

性能曲线

Performance Curves

经认证的性能是A类安装：自由入口，自由出口。各项性能额定值不包括附属物(附件)的影响。所示A加权声音性能额定值已按AMCA International标准301计算。所示值为安装类型A：自由入口，自由出口的声功率级（出口L_wA）。

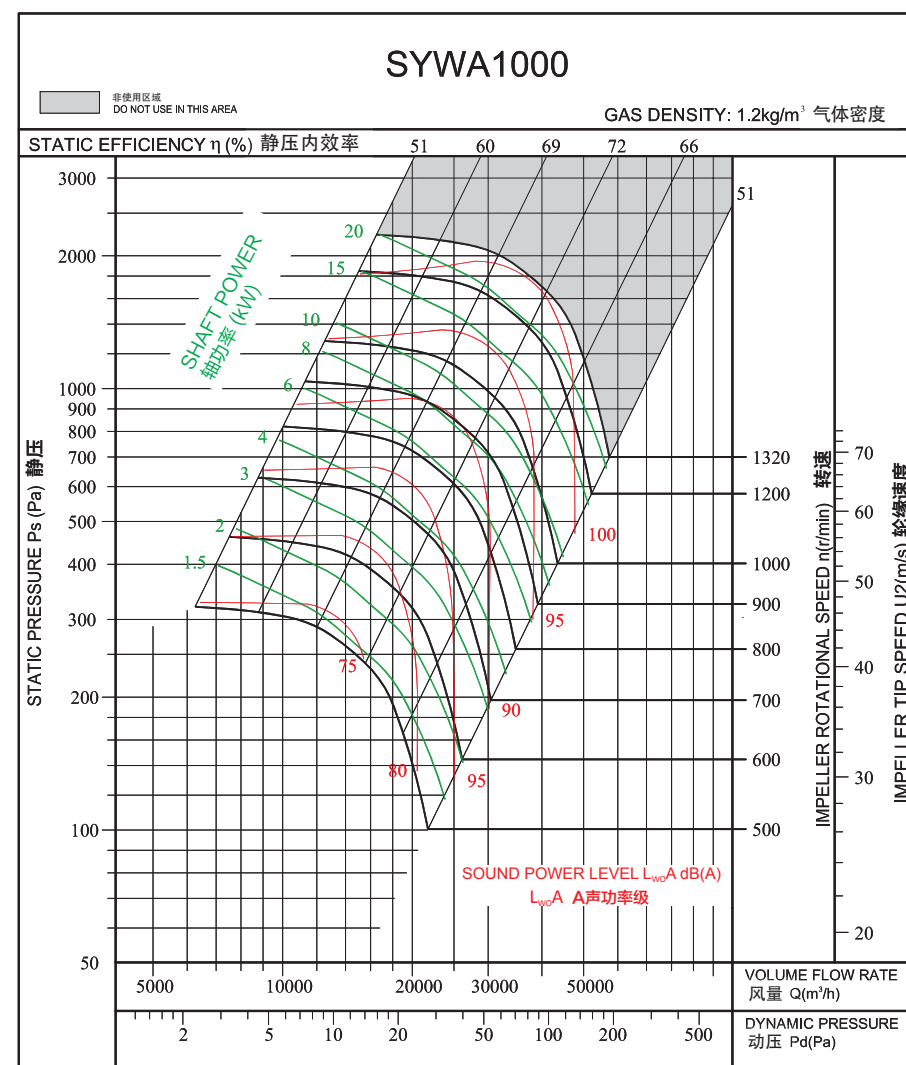
Performance certified is for installation type A: free inlet, free outlet. Performance ratings do not include the effects of appurtenances (accessories). The A-weighted sound ratings shown have been calculated per AMCA International Standard 301. Values shown are for outlet L_wA sound power levels for installation type A: free inlet, free outlet.

性能曲线

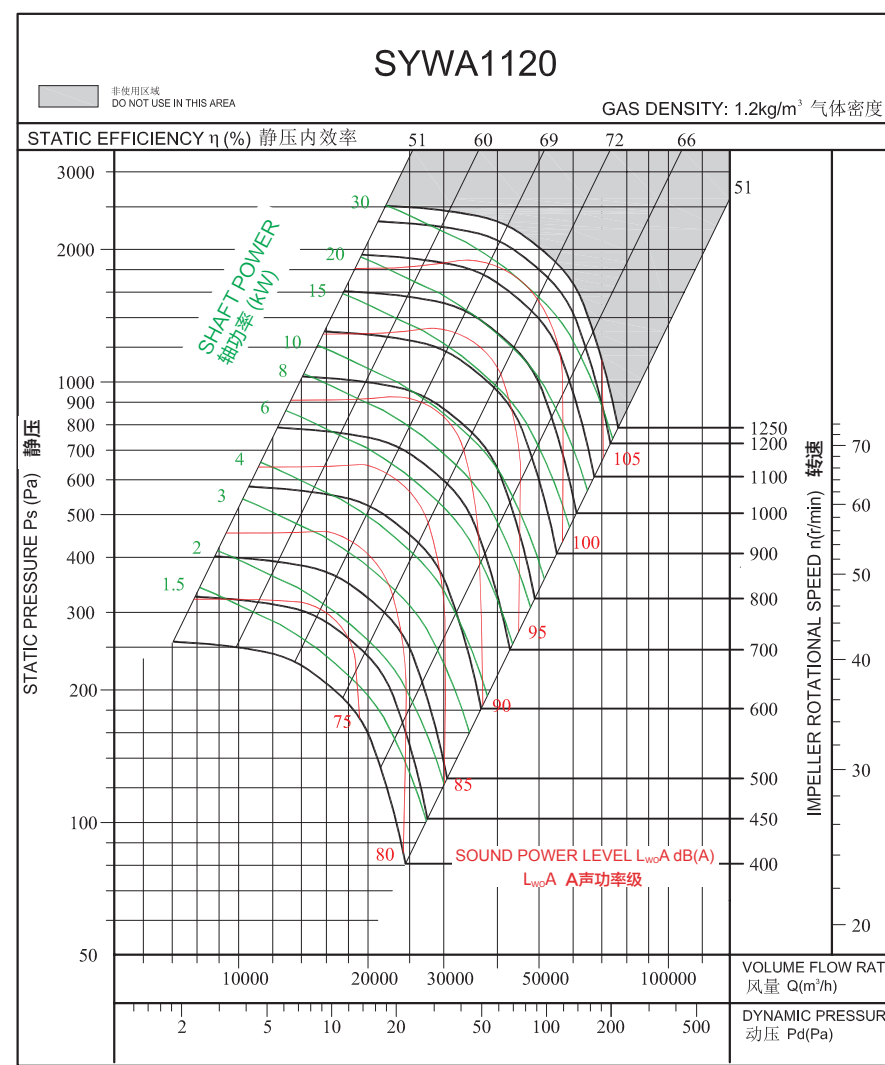
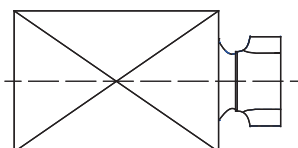
Performance Curves

经认证的性能是A类安装：自由入口，自由出口。各项性能额定值不包括附属物(附件)的影响。所示A加权声音性能额定值已按AMCA International标准301计算。所示值为安装类型A：自由入口，自由出口的声功率级（出口L_wA）。

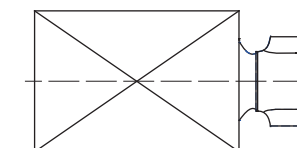
Performance certified is for installation type A: free inlet, free outlet. Performance ratings do not include the effects of appurtenances (accessories). The A-weighted sound ratings shown have been calculated per AMCA International Standard 301. Values shown are for outlet L_wA sound power levels for installation type A: free inlet, free outlet.



Measured in installation A according to AMCA Standard 210:



Measured in installation A according to AMCA Standard 210:



技术参数

Technical Data

Wheel diameter 叶轮直径	D = 1250 mm	Fan weight 风机重量	m = 650 kg
Moment of inertia 转动惯量	J = 37.11 kg·m ²	Speed limit 极限转速	n _{max} = 1130 r/min

技术参数

Technical Data

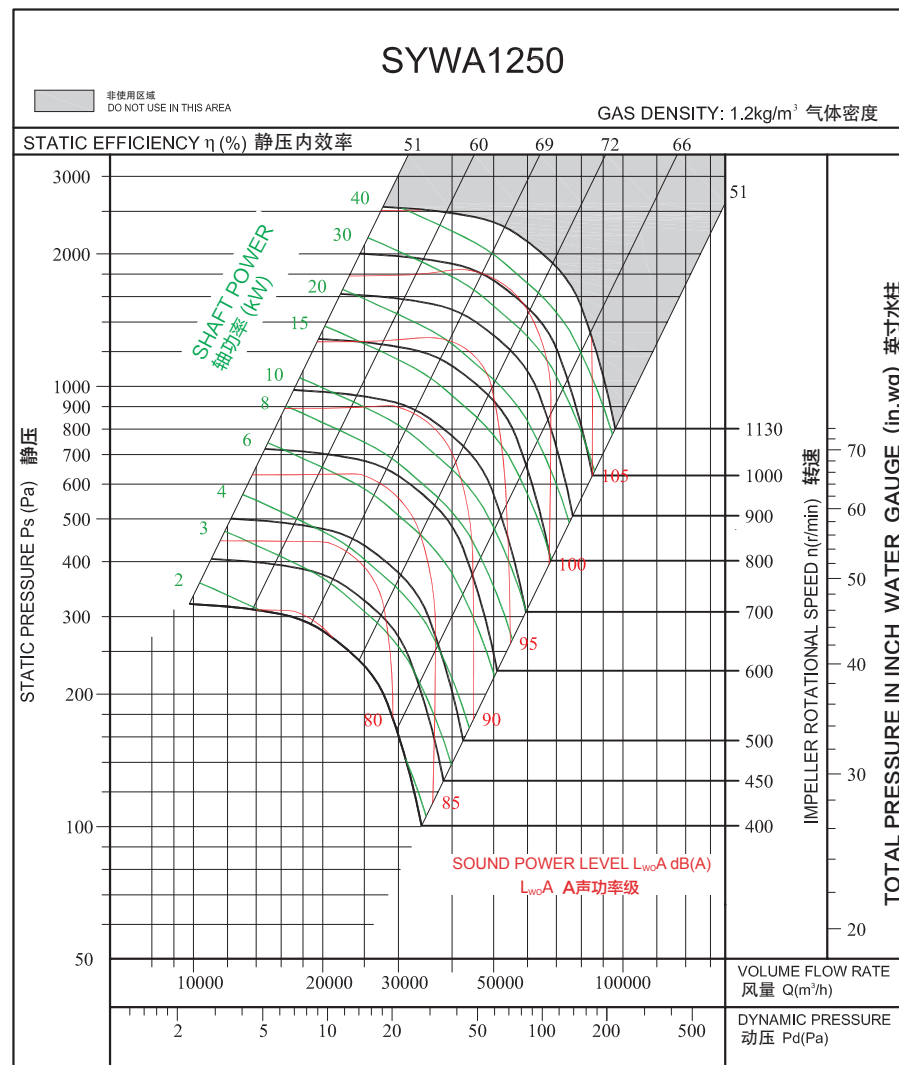
Wheel diameter 叶轮直径	D = 1400 mm	Fan weight 风机重量	m = 790 kg
Moment of inertia 转动惯量	J = 56.32 kg·m ²	Speed limit 极限转速	n _{max} = 1060 r/min

性能曲线

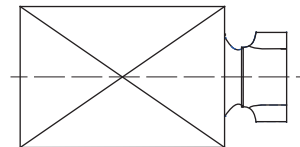
Performance Curves

经认证的性能是A类安装：自由入口，自由出口。各项性能额定值不包括附属物(附件)的影响。所示A加权声音性能额定值已按AMCA International标准301计算。所示值为安装类型A：自由入口，自由出口的声功率级（出口L_{wcA}）。

Performance certified is for installation type A: free inlet, free outlet. Performance ratings do not include the effects of appurtenances (accessories). The A-weighted sound ratings shown have been calculated per AMCA International Standard 301. Values shown are for outlet L_{wcA} sound power levels for installation type A: free inlet, free outlet.



Measured in installation A according to AMCA Standard 210:

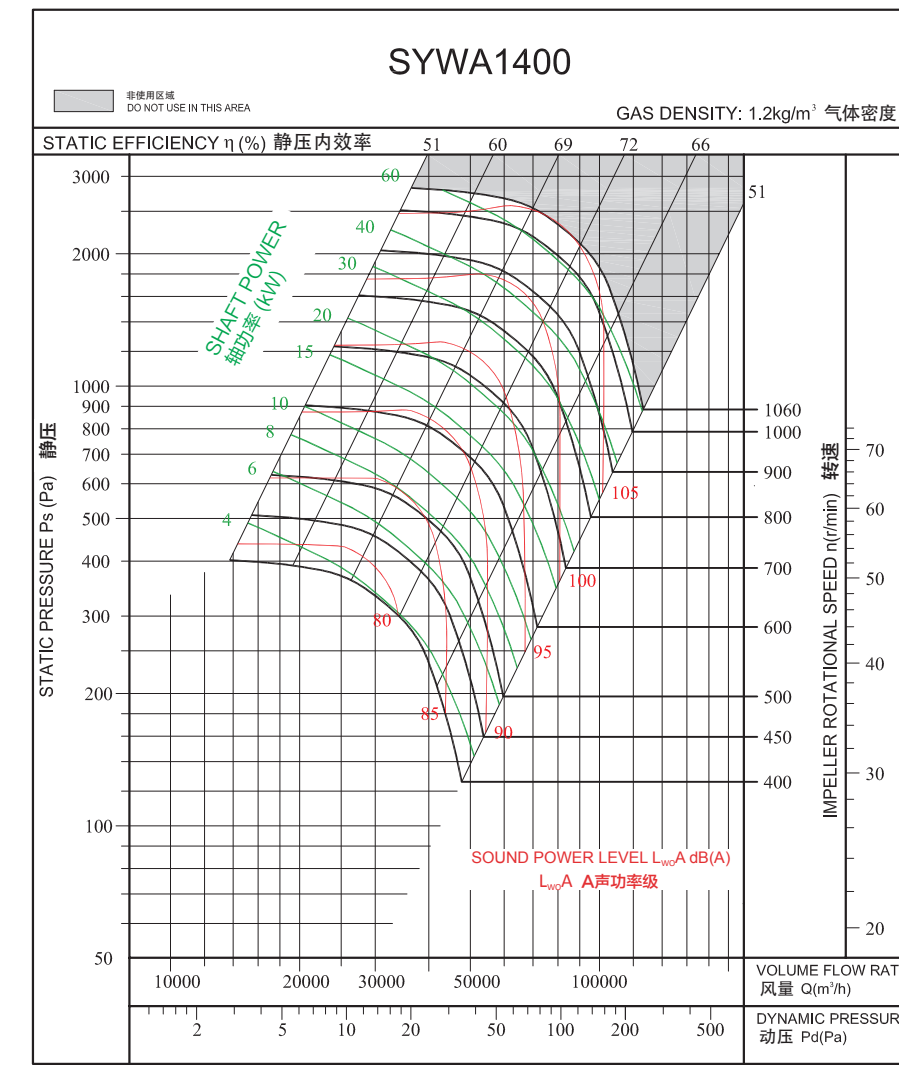


性能曲线

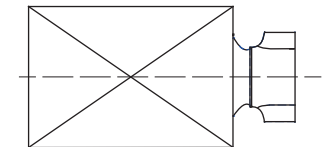
Performance Curves

经认证的性能是A类安装：自由入口，自由出口。各项性能额定值不包括附属物(附件)的影响。所示A加权声音性能额定值已按AMCA International标准301计算。所示值为安装类型A：自由入口，自由出口的声功率级（出口L_{wcA}）。

Performance certified is for installation type A: free inlet, free outlet. Performance ratings do not include the effects of appurtenances (accessories). The A-weighted sound ratings shown have been calculated per AMCA International Standard 301. Values shown are for outlet L_{wcA} sound power levels for installation type A: free inlet, free outlet.



Measured in installation A according to AMCA Standard 210:

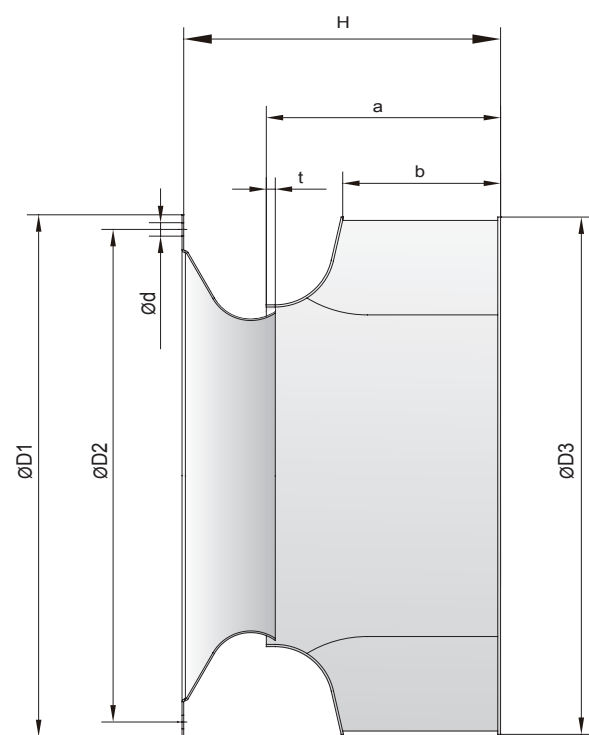


叶轮与进风圈尺寸统计表

Dimension of Wheel and Inlet Cone

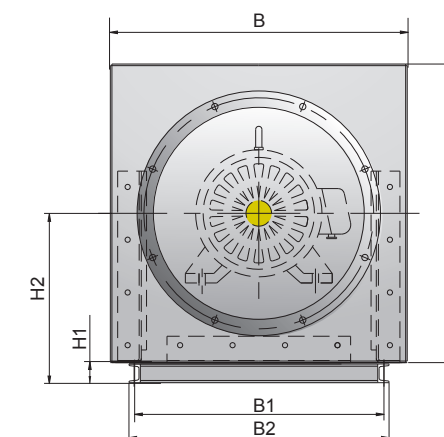
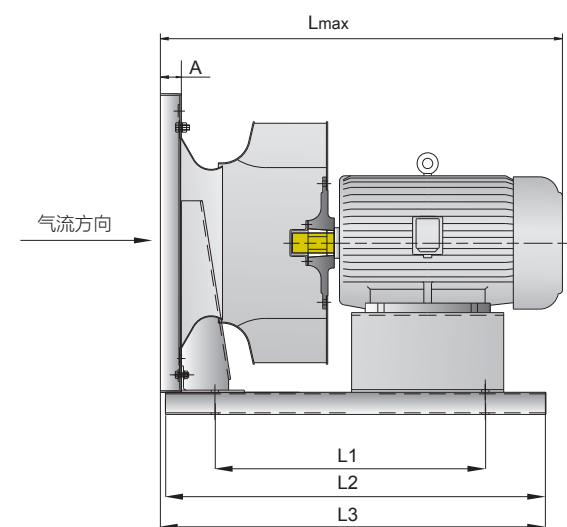
SYWA系列风机外形尺寸

SYWA Series Ventilator Overall Dimension



单位: mm

Dim Modle	a	b	t	ΦD1	ΦD2	ΦD3	H	n	Φd
SYWA280	117	84	4	300	280	323	169	6	7
SYWA315	126	92	5	355	325	360	178	6	7
SYWA355	144	103	6	383	344	406	196	6	7
SYWA400	160	116	7	423	386	456	220	6	7
SYWA450	179	131	7	466	432	512	243	6	7
SYWA500	200	145	8	515	485	570	277	8	9
SYWA560	229	164	8	570	544	640	314	8	9
SYWA630	253	184	9	635	605	720	353	8	9
SYWA710	283	206	10	700	670	810	394	8	9
SYWA800	320	233	12	778	750	912	447	12	12
SYWA900	357	260	14	875	844	1023	503	12	12
SYWA1000	400	291	16	980	945	1120	561	12	12
SYWA1120	448	326	16	1044	1080	1254	639	12	12
SYWA1250	502	366	18	1220	1180	1400	696	14	14
SYWA1400	564	411	18	1360	1310	1568	796	14	14



单位: mm

型号	电机机座号	A	B	C	H1	H2	L1	L2	L3	L.max	B1	B2
SYWA280	Y71-100	35	396	473	50	275	360	460	465	605	310	346
SYWA315	Y71-112	35	440	523	50	303	360	460	465	615	360	396
SYWA355	Y71-80	35	480	569	50	329	300	420	425	635	400	436
	Y90-112						380	500	505			
SYWA400	Y80-112	35	520	624	50	364	400	520	525	755	450	486
	Y132						500	620	625			
SYWA450	Y90-112	35	590	697	50	402	400	520	525	780	510	546
	Y132						500	620	625			
SYWA500	Y90-112	40	650	778	63	453	440	600	605	950	550	590
	Y132-160						620	780	785			
SYWA560	Y90-112	40	720	878	63	518	460	620	625	990	610	650
	Y132-160						660	820	825			
SYWA630	Y112	45	800	975	63	575	510	670	675	1025	685	725
	Y132-160						700	860	865			
SYWA710	Y112-132	50	880	1116	80	676	600	800	805	1125	770	810
	Y160-180						740	940	945			
SYWA800	Y132	50	1000	1250	80	750	650	850	860	1180	850	890
	Y160-180						800	1000	1010			
SYWA900	Y132	50	1120	1393	80	833	700	900	910	1240	960	1000
	Y160-180						900	1100	1110			
SYWA1000	Y160-200	50	1250	1536	80	911	1000	1200	1210	1365	1080	1120
	Y200-225						1200	1400	1410			
SYWA1120	Y250-280	60	1400	1864	100	1032	1400	1600	1610	1650	1210	1250
	Y225-250						1300	1500	1510			
SYWA1250	Y280-315	60	1560	2078	100	1139	1500	1700	1710	1800	1360	1400
	Y250						1400	1600	1610			
SYWA1400	Y280-315	60	1750	2330	100	1265	1600	1800	1810	1950	1500	1540
	Y250						1400	1600	1610			

本样本中所述的风机特性,如尺寸、性能参数等,本公司保留更改的权利,恕不另行通知;如有不明之处,请来电询问。
This fan features described in the sample, such as size, performance parameters, the Company reserves the right to change without notice; if unknown place, please call us.